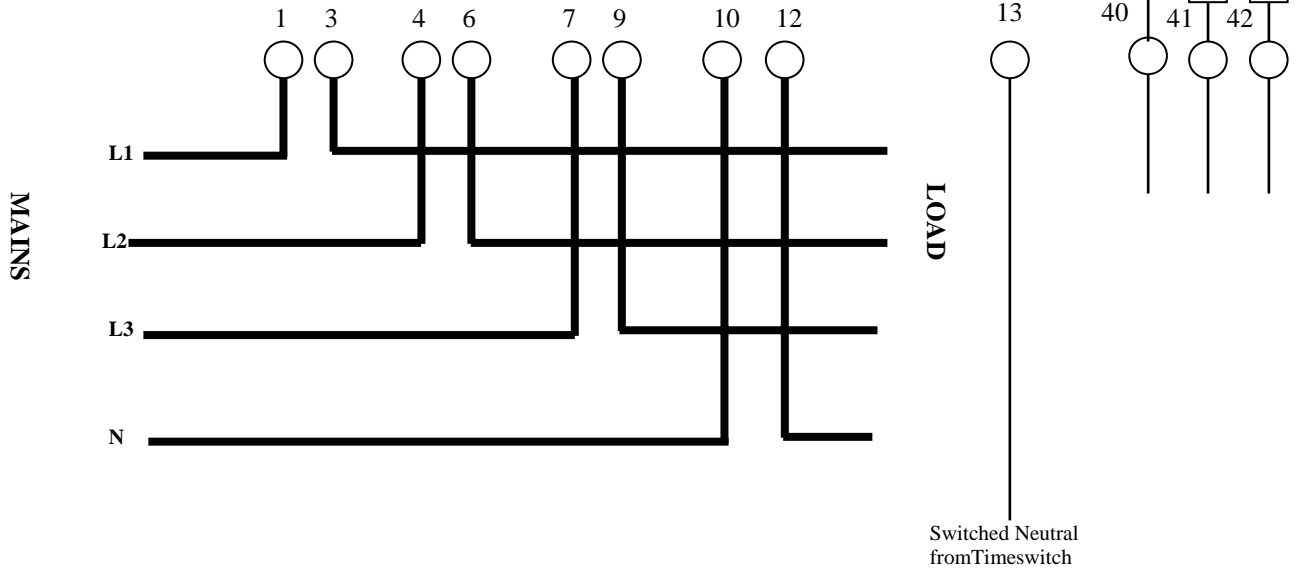
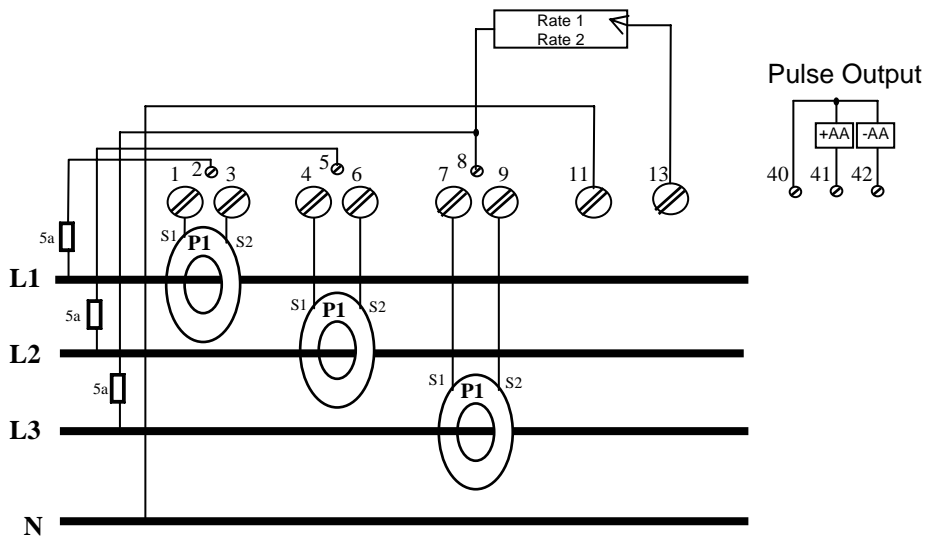




Connection for Direct wired version



Connection for CT version



1. Please ensure all CTs are installed as per wiring diagram. E.g., Correct polarity of CTs is ESSENTIAL ie., (P1-Mains) & (P2-Load)
2. Check all S1 & S2 Connections are correct as per wiring diagram otherwise problems will result with the register displays.
3. For health & safety reasons it should be noted that if a Current Transformer is operated with the secondary (S1 & S2) open circuited, DANGEROUS voltages may be generated at the secondary terminals or leads.

Inputs & Outputs

Inputs

The meter is equipped with one (two-rate meters) or two (3- and 4-rate meters) tariff inputs that are used for external tariff changeover with a phase voltage.

Outputs

The meter is equipped with one or two impulse outputs. Two impulse outputs are used in case of bi-directional energy flow (an output for each energy flow direction).

Outputs can be an S0 (DIN 43864) or opto-MOS relay type.

Anti-fraud protection

Detection is performed by:

- Meter cover opening (option)
- Terminal cover opening (option)

Each detection of meter cover or terminal cover opening is stored as increment in a special register that can be readout by means of a MeterView or MeterRead service software.

A number of meter cover opening is stored in register.

A number of terminal cover opening is stored in register.

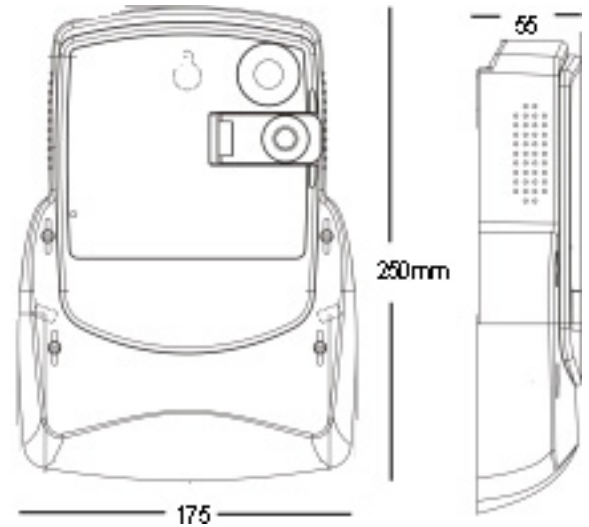
If the above stated detections function also in a voltage-free state, the meter should be equipped with a battery. It is not necessary to replace it during the meter lifetime.



Fig. 7 – Meter constituent parts

1. An LCD
2. Meter technical data
3. A legend of data identification codes
4. A meter cover sealing screw
5. A terminal cover sealing screw
6. An IR optical port
7. A Scroll key
8. An impulse LED

Dimensions



Meter case

The meter case is made of self-extinguishing polycarbonate that can be recycled.

Maintenance

The meter is designed and manufactured in such a way that it does not need any maintenance interventions in the entire lifetime. Measuring stability assures that no recalibration is required. If battery is built into the meter, its capacity is sufficient to back up all functions for the entire meter lifetime.

Lifetime

The meter is designed for a 20-year lifetime at normal operating conditions.

Meter connection procedure

1. Place the meter to a connection position
2. Connect the meter to network
3. Check connection indication:
 - LED is lit (load current is less than starting current)
 - LED is blinking (proportional to load current strength)
4. Check connection – see LCD indications:
 - Presence of all three phases - ▼ is lit at 5th position
 - Failure of at least one phase - ▼ is not lit at 5th place
 - Reversed phase sequence - ▼ is blinking at the 5th place